



# LIGHTWEIGHT POWER FOR URBAN SOLUTIONS.

OMAL IS WITH YOU.

[WWW.OMAL.COM](http://WWW.OMAL.COM)

**Specialists in  
valves and actuators  
since 1981.**



**Our history**



**Other applications**



**Sustainability**



# MOBILITY: ENVIRONMENTAL AND URBAN SERVICES SERIES

Reduced weight and space thanks to their lightness and compactness.



**MAGNUM WAFER & SPLIT WAFER**



**MAGNUM CASTING WAFER**



**KRATOS**



**KRAVEN BUTTERFLY VALVES**



**VIP EVO**



**ARES**



**ELECTRIC ACTUATORS**



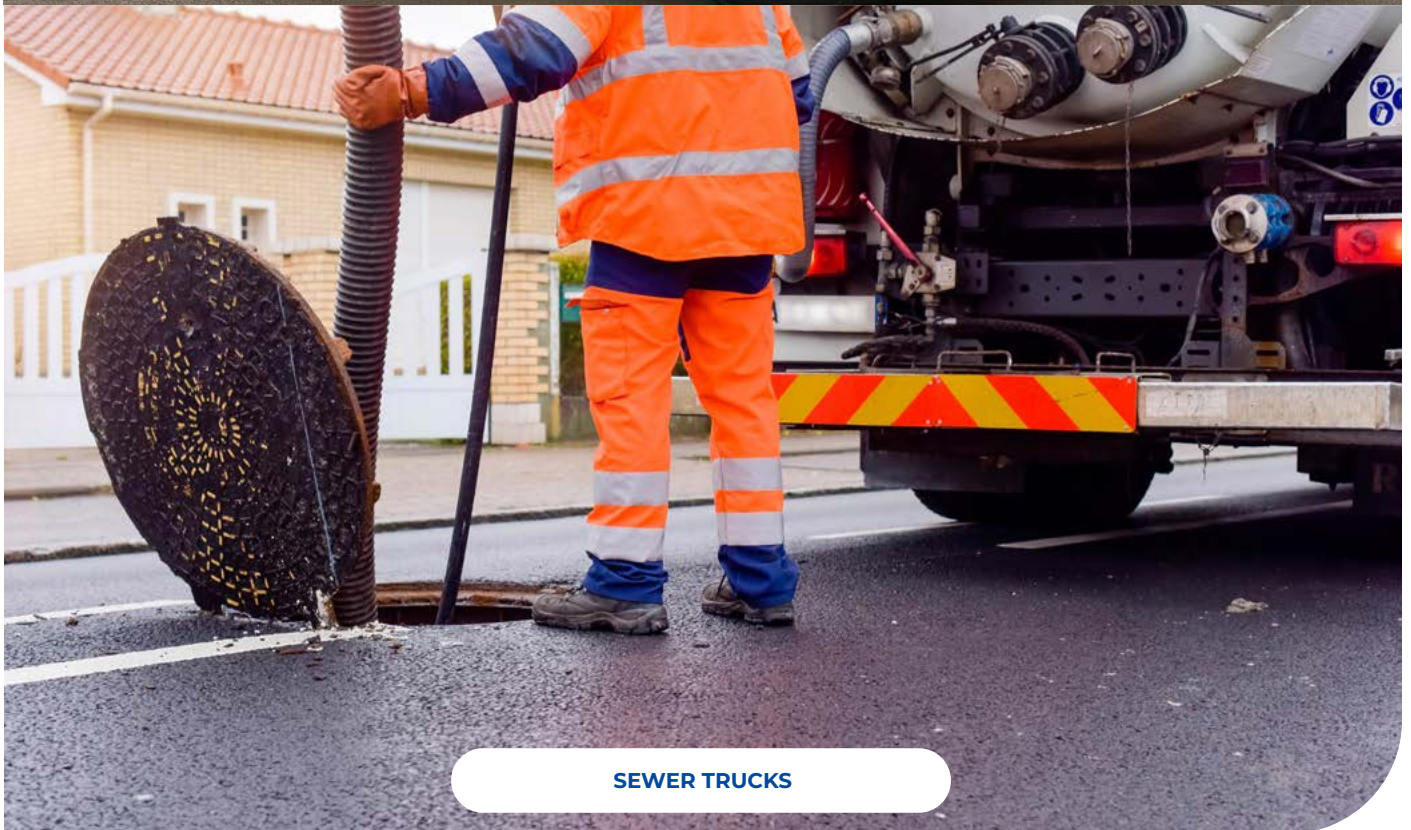
**AGO PNEUMATIC ACTUATORS**



# APPLICATIONS



ROAD CLEANING TRUCKS



SEWER TRUCKS



# TECHNICAL DETAILS

## MAGNUM

### WAFER BALL VALVES



#### SPECIFICATIONS

- Size:**
  - DN 15 ÷ DN 100 [mm]
  - 1/2" ÷ 4" [inch]
- Body material:**
  - A105 Carbon steel
  - 316 Stainless steel
- Available seats:**
  - PTFE Modified
  - PTFE Glass filled
  - PTFE Carbon filled
  - PEEK
- End connections:**
  - Flanged RF
- Pressure class:**
  - ANSI 150-300; PN 16-40
- Options:**
  - Mono-directional ball
  - Locking device
  - Stem Extension
  - Bottom tank
  - Oxygen use (on request)
  - Hydrogen use (on request)
- Certifications:**
  - Ex CE/UKCA
  - Pressure Equipment CE/UKCA
  - SIL (up to SIL3)
  - TA Luft & Fugitive Emission
  - Fire Safe

## MAGNUM

### SPLIT WAFER BALL VALVES



#### SPECIFICATIONS

- Size:**
  - DN 15 ÷ DN 200 [mm]
  - 1/2" ÷ 8" [inch]
- Body material:**
  - A105 Carbon steel
  - 316 Stainless steel
- Available seats:**
  - PTFE Modified
  - PTFE Glass filled
  - PTFE Carbon filled
  - Devlon
  - PEEK
- End connections:**
  - Flanged RF
- Pressure class:**
  - ANSI 150-300; PN 16-40
  - ANSI 600; PN 63-100 (DN≤100)
- Options:**
  - 3-Ways (DN≤100)
  - Mono-directional ball
  - Locking device
  - Stem Extension
  - Bottom tank
  - Oxygen use (on request)
  - Hydrogen use (on request)
- Certifications:**
  - Ex CE/UKCA
  - Pressure Equipment CE/UKCA
  - SIL (up to SIL3)
  - TA Luft & Fugitive Emission
  - Fire Safe

## MAGNUM

### CASTING WAFER BALL VALVES



#### SPECIFICATIONS

- Size:**
  - DN 25 ÷ DN 100 [mm]
  - 1" ÷ 4" [inch]
- Body material:**
  - CF8M Stainless steel
- Available seats:**
  - PTFE Modified
  - PTFE Glass filled
  - PTFE Carbon filled
  - PEEK
- End connections:**
  - Flanged RF
- Pressure class:**
  - DN≤40; PN 16-40
  - DN≥50; PN 16
- Options:**
  - Mono-directional ball
  - Locking device
  - Stem Extension
  - Bottom tank
  - Oxygen use (on request)
  - Hydrogen use (on request)
- Certifications:**
  - Ex CE/UKCA
  - Pressure Equipment CE/UKCA
  - SIL (up to SIL3)
  - TA Luft & Fugitive Emission
  - Fire Safe



# KRATOS

## HIGH PRESSURE BALL VALVES



### SPECIFICATIONS

<b>Size:</b>	<ul style="list-style-type: none"> <li>DN 8 ÷ DN 50 [mm]</li> <li>1/4" ÷ 2" [inch]</li> </ul>
<b>Body material:</b>	<ul style="list-style-type: none"> <li>A350-LF2 Carbon steel</li> <li>316 Stainless steel</li> </ul>
<b>Available seats:</b>	<ul style="list-style-type: none"> <li>PTFE Carbon filled</li> <li>PTFE Glass filled</li> <li>Devlon</li> <li>PEEK</li> </ul>
<b>End connections:</b>	<ul style="list-style-type: none"> <li>ISO 228-1</li> <li>NPT (ANSI B1.20.1)</li> </ul>
<b>Max pressure:</b>	<ul style="list-style-type: none"> <li>PN 414 (varies by size)</li> <li>6000 PSI (varies by size)</li> </ul>
<b>Options:</b>	<ul style="list-style-type: none"> <li>Oxygen use (on request)</li> <li>Hydrogen use (on request)</li> <li>Mono-directional ball</li> <li>BW / SW connection</li> <li>Stem Extension</li> </ul>
<b>Certifications:</b>	<ul style="list-style-type: none"> <li>Ex CE/UKCA</li> <li>Pressure Equipment CE/UKCA</li> <li>Fugitive Emission</li> <li>SIL (up to SIL3)</li> <li>Fire Safe</li> </ul>

# KRAVEN

## BUTTERFLY VALVES



### SPECIFICATIONS

<b>Size:</b>	<ul style="list-style-type: none"> <li>DN 40 ÷ DN 300 [mm]</li> <li>1 1/2" ÷ 12" [inch]</li> </ul>
<b>Body material:</b>	<ul style="list-style-type: none"> <li>Cast iron</li> </ul>
<b>Disc material:</b>	<ul style="list-style-type: none"> <li>Cast iron</li> <li>CF8M</li> <li>Bronze aluminium</li> </ul>
<b>Available seats:</b>	<ul style="list-style-type: none"> <li>EPDM</li> <li>NBR</li> <li>FKM</li> <li>PTFE</li> </ul>
<b>End connections:</b>	<ul style="list-style-type: none"> <li>Wafer</li> <li>Lug</li> </ul>
<b>Pressure class:</b>	<ul style="list-style-type: none"> <li>ANSI 150, PN 10-16, PN 6</li> </ul>
<b>Options:</b>	<ul style="list-style-type: none"> <li>Pneumatic actuation</li> <li>Electric actuation</li> <li>Gear box</li> </ul>
<b>Certifications:</b>	<ul style="list-style-type: none"> <li>Ex CE/UKCA</li> <li>Pressure Equipment CE/UKCA</li> </ul>

# VIP EVO®

## PNEUMATIC COAXIAL VALVES PN 40 / 580 PSI



### SPECIFICATIONS

<b>Size:</b>	<ul style="list-style-type: none"> <li>DN 10 ÷ DN 50 [mm]</li> <li>3/8" ÷ 2" [inch]</li> </ul>
<b>Body material:</b>	<ul style="list-style-type: none"> <li>Aluminium - brass</li> </ul>
<b>Available seats:</b>	<ul style="list-style-type: none"> <li>PTFE Glass filled</li> <li>Sealing: FKM, NBR, EPDM</li> </ul>
<b>End connections:</b>	<ul style="list-style-type: none"> <li>NPT (ANSI B1.20.1)</li> <li>ISO 7/1</li> </ul>
<b>Max pressure:</b>	<ul style="list-style-type: none"> <li>PN 40</li> <li>580 PSI</li> </ul>
<b>Variations:</b>	<ul style="list-style-type: none"> <li>Double acting</li> <li>Spring return N.C. - N.O.</li> </ul>
<b>Options:</b>	<ul style="list-style-type: none"> <li>Namur plate</li> <li>Limit switch</li> <li>Oxygen use (on request)</li> </ul>
<b>Certifications:</b>	<ul style="list-style-type: none"> <li>Ex CE/UKCA</li> <li>Pressure Equipment CE/UKCA</li> <li>SIL (up to SIL3)</li> </ul>



## ARES

### PNEUMATIC ANGLE SEAT VALVES



#### SPECIFICATIONS

	<b>Size:</b> <ul style="list-style-type: none"> <li>DN 15 ÷ DN 50 [mm]</li> <li>3/8" ÷ 2" [inch]</li> </ul>
	<b>Body material:</b> <ul style="list-style-type: none"> <li>Stainless steel</li> </ul>
	<b>Available seats:</b> <ul style="list-style-type: none"> <li>PTFE Modified</li> <li>FKM</li> <li>NBR</li> <li>EPDM</li> </ul>
	<b>End connections:</b> <ul style="list-style-type: none"> <li>NPT (ANSI B1.20.1)</li> <li>ISO 7/1</li> <li>ISO 228-1</li> <li>Flanged (PN 16 - ANSI 150)</li> <li>Weld ends</li> <li>Clamp</li> </ul>
	<b>Max pressure:</b> <ul style="list-style-type: none"> <li>PN 16 - PN 25</li> <li>230 - 360 PSI</li> </ul>
	<b>Variations:</b> <ul style="list-style-type: none"> <li>Double acting</li> <li>Spring return N.C. - N.O.</li> <li>Manual operated</li> </ul>
	<b>Options:</b> <ul style="list-style-type: none"> <li>Oxygen use (on request)</li> <li>Namur plate</li> <li>Limit switch box</li> </ul>
	<b>Certifications:</b> <ul style="list-style-type: none"> <li>Ex CE/UKCA</li> <li>Pressure Equipment CE/UKCA</li> </ul>

## EA

### ELECTRIC ACTUATORS



#### SPECIFICATIONS

	<b>Type:</b> <ul style="list-style-type: none"> <li>Electric actuator "AE" on-off rotary type</li> <li>Electric actuator "AM" rotary modular type</li> <li>Electric actuator "EA" on-off rotary type</li> </ul>
	<b>Nominal torque:</b> <ul style="list-style-type: none"> <li>10 Nm ÷ 1960 Nm</li> <li>88 in-lbs ÷ 17350 in-lbs</li> </ul>
	<b>Size:</b> <ul style="list-style-type: none"> <li>AE 10 ÷ AE 2000</li> <li>AM 20 ÷ AM 2000</li> <li>EA0035 ÷ EA0240</li> </ul>
	<b>Body material:</b> <ul style="list-style-type: none"> <li>Aluminium</li> </ul>
	<b>Variations:</b> <ul style="list-style-type: none"> <li>ON-OFF</li> <li>Modulating</li> <li>IP 68</li> </ul>
	<b>Options:</b> <ul style="list-style-type: none"> <li>115 Vac</li> <li>230 Vac</li> <li>24 Vdc</li> <li>Torque limiter</li> <li>Space heater</li> <li>R/I converter</li> <li>Speed controller</li> </ul>

## AGC

### ALUMINIUM PNEUMATIC ACTUATORS



#### SPECIFICATIONS

	<b>Type:</b> <ul style="list-style-type: none"> <li>Scotch yoke</li> </ul>
	<b>Nominal torque:</b> <ul style="list-style-type: none"> <li>DA (Double acting): 8 Nm ÷ 8000 Nm / 70 in-lbs ÷ 70806 in-lbs</li> <li>SR (Spring return): 15 Nm ÷ 4000 Nm / 133 in-lbs ÷ 35403 in-lbs</li> </ul>
	<b>Size:</b> <ul style="list-style-type: none"> <li>DA 8 ÷ DA 8000</li> <li>SR 15 ÷ SR 4000</li> </ul>
	<b>Body material:</b> <ul style="list-style-type: none"> <li>Aluminium</li> </ul>
	<b>Variations:</b> <ul style="list-style-type: none"> <li>Double acting</li> <li>Spring return N.C. - N.O.</li> </ul>
	<b>Options:</b> <ul style="list-style-type: none"> <li>Low temp. version: -50°C / -58°F</li> <li>High temp. version: +150°C / +302°F</li> <li>Adjustable rotation</li> <li>Surface treatments</li> </ul>
	<b>Certifications:</b> <ul style="list-style-type: none"> <li>Ex CE/UKCA</li> <li>SIL (up to SIL3)</li> </ul>



## **OMAL S.p.A. Società Benefit**

**Headquarter** Via Ponte Nuovo, 11 - 25050 Rodengo Saiano (BS), Italy

**Production Site** Via Brognolo, 12 - 25050 Passirano (BS), Italy

Ph. +39 030 8900145 · Fax +39 030 8900423 · [info@omal.it](mailto:info@omal.it)

## **OMAL USA Corp.**

1835 Airport Exchange Blvd, Suite 100- 41018 Erlanger (Kentucky), USA

Ph. +1 (859) 900-2108 · [info@omal.com](mailto:info@omal.com)

## **OMAL Asia Pacific Ltd.**

26/73, Moo 7, Racha Thewa Sub-district, Bang Phli District,  
Samut Prakan Province, (Bangkok), Thailand

Ph. 02-117-1188 · [info@omal.co.th](mailto:info@omal.co.th)

[www.omal.com](http://www.omal.com)